

LONDON OPEN HOUSE

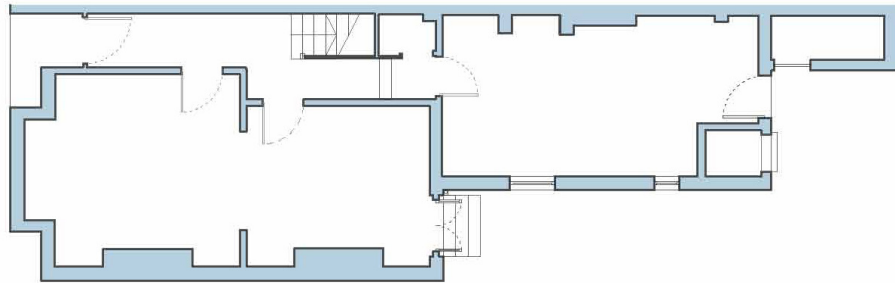


A family required more space. A single space to eat, cook, play, read and so by extending to the side of the property we make an area large enough to house a table with an integrated bench at the new wall where all these activities can take place.

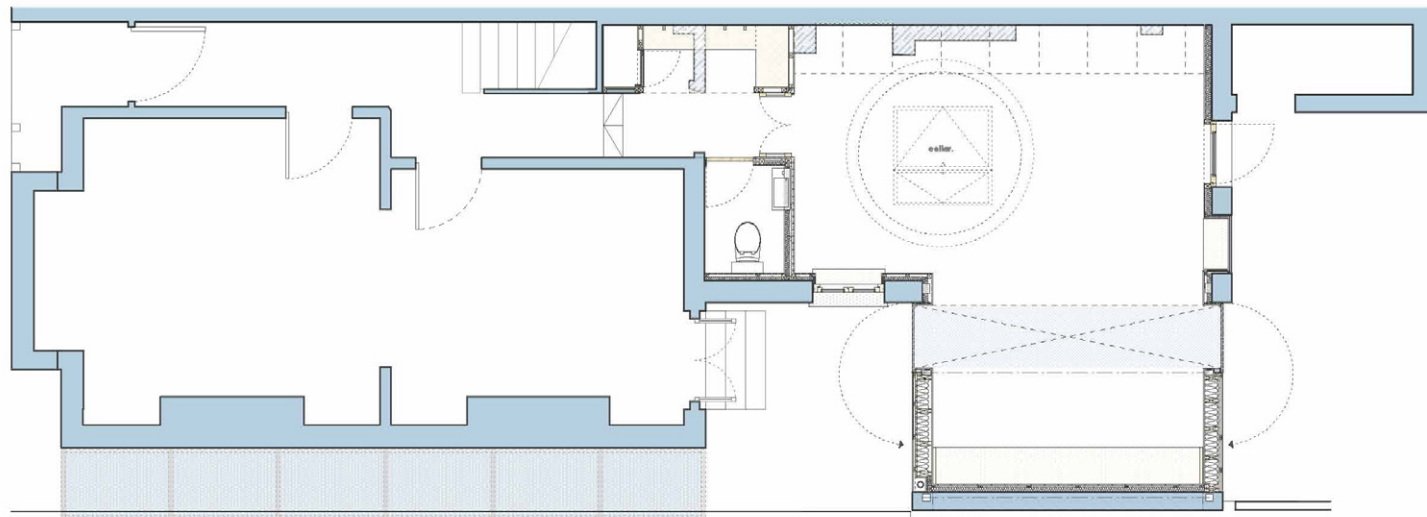
The new extension creates a courtyard area where the double doors open from the original house. This small area is a controlled quiet space to breathe in the centre of the property.

Oak is used internally wherever activities take place; as a seat so that where you sit and lean against the wall the material is warm and durable, or at the kitchen and island as the counter and sides to the units where the most traffic occurs.

The extension is modelled using three 'strips'. A strip of uninterrupted glazing connects the existing with the new where oversized frameless glass doors wrap up and over as roof glazing. A strip of slim cedar cladding again drapes up and over and a leaf of engineering brick terminates at the boundary line. Views from the windows above are often not considered satisfactorily, but in this case the view is uncompromised and the composition is seen even more clearly.

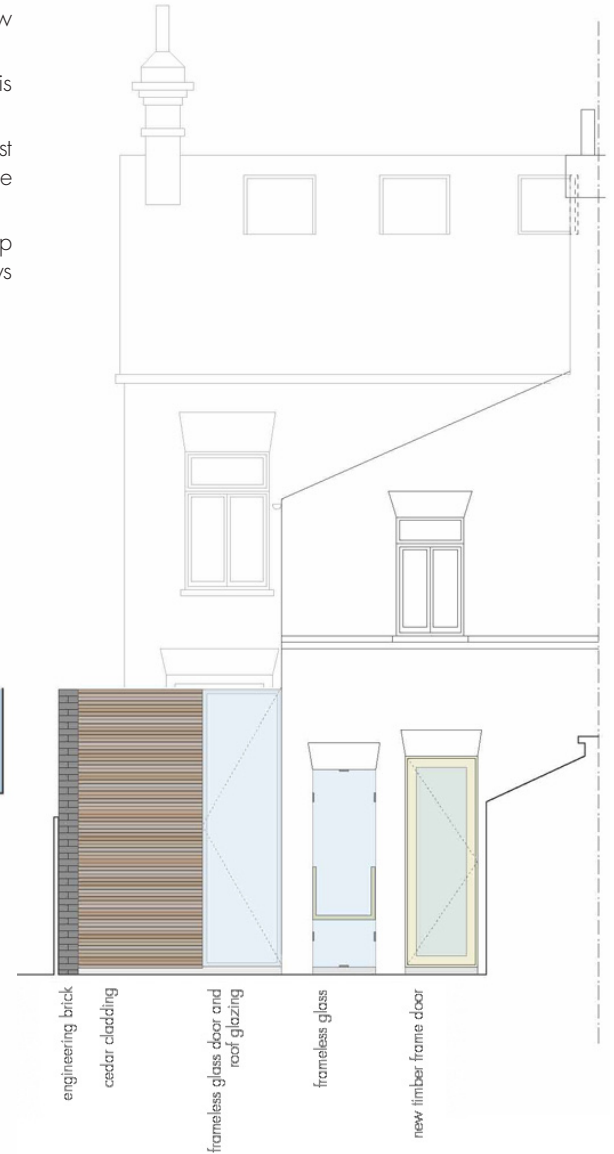


before



as built

Architect	Knott Architects
Engineers	Michael Baigent Orla Kelly 020 8568 4871
Contractors	Malcolm Shelton Building Project Management 07958 125 275
Glass	Glass UK
Contract Dates	31.04.08 to date



engineering brick
cedar cladding

frameless glass door and
roof glazing

frameless glass

new timber frame door