

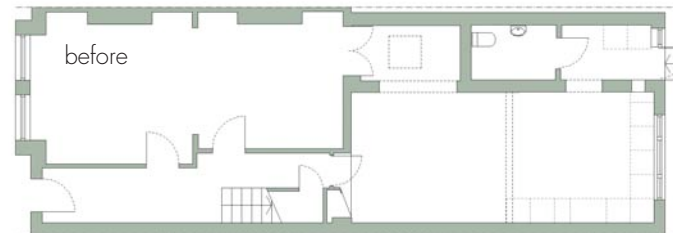
# KNOTT ARCHITECTS - BARRINGTON ROAD, CROUCH END, LONDON



The works involved the extension and internal re-modelling of the rear of this two storey Victorian terrace to create an open plan living dining area and a new open connection to the rear reception room, making it more suitable for contemporary family living.

A new full length glazed roof along the side of the existing extension and a new sliding folding screen to the garden was added, opening up and connecting the space with the outdoors and flooding the space with light.

Various 'pods' containing fitted furniture, WC, kitchen, utility cupboard, seating and shelving were inserted, redefining and moulding the space and concealing the existing structure that was retained for structural reasons.



## LONDON OPEN HOUSE



Architect Knott Architects  
Engineers Michael Baigent  
Orla Kelly  
020 8568 4871  
Contractors Roland Sinkevicius  
Building Contractor  
0790 485 5668  
Contract dates January - August 2009

